

Angus McDonald

Pear 2003 oil on canvas 30 x 30cm

Angus McDonald is an artist described by prominent art writer Michael Reid as one of Australia's most collectible and burgeoning talents. In the last decade he has had 18 sell out exhibitions, and shows regularly across Australia, in Japan and in London.

His still-life paintings, sky-scapes and large chalk drawings of bulls, cows and horses are well known for their hard-edged and erstwhile emotive power. While strikingly contemporary in nature, they are clearly influenced by a respect and affection for classical realism. McDonald names many of the early Spanish still-life painters such as Zurbaran, Cotan and Velazquez as major influences because of the truthful way they described light in their work.

Dr. Jacqueline Millner from the University of Western Sydney, writes "Angus McDonald's paintings are marked by that very enhanced realism that renders the ordinary extraordinary. Through his adept handling of light, line, colour and composition, McDonald transforms his humble subjects of white cloth, fruit and receptacle into mesmerising scenes that refresh our vision."

Late last year McDonald accepted an invitation to travel to Antarctica as an expedition painter with the Mawson's Huts Foundation. Together with the Australian Antarctic Division, the Foundation is directing a project to conserve the huts built on the Antarctic continent by Sir Douglas Mawson during his historic expedition in 1911.

McDonald was away for a month during which he drew, painted and photographed the region. In September this year he subsequently held a major exhibition at the Rebecca Hossack Art Gallery in London on behalf of the Foundation entitled 'Antarctica'. The exhibition, containing editioned photography, paintings and a reproduction of Douglas Mawson's campaign chair that still remains in the huts to this day, was held with the support of the Australian High Commission in London. An Australian preview was held concurrently at the Lismore Regional Gallery in New South Wales. Many of his Antarctic images are also included in a major photographic book charting Australia's 100 year connection with Antarctica, "Mawsons Huts", to be published by Allen and Unwin in 2008.



Pitcher, 2000, oil on canvas, 120 x 80cm



Rationalised, 2006, black & white chalk on toned paper, 130 x 192cm



Luciance, 2007, mixed media on paper, 145 x 232cm
Sitting Bull, 2003, black & white chalk on toned paper, 160 x 220cm





Still life, 2005, oil on canvas, 330 x 110cm



Recently, several pieces of furniture that he designed with John Madden were exhibited at FORM, a large crossover design fair in London where his work sat alongside many of Europe's big names in contemporary design, including Paul Smith and Tom Dixon. The pieces generated large interest at the fair and were sold out. One of the pieces, The Ferdinand Rocker, was also a prize winner at the 2008 Australian Studio Furniture Design Awards.

He writes regularly for arts magazine Arts Quarterly, and recently wrote a feature piece on Ice for the UK Magazine Resurgence.

His last major exhibition, entitled 'SNORT!', comprising drawings, paintings, etchings, sculpture, bronzes, shoe designs and furniture, was held at the Tim Olsen Gallery in Sydney in March 2008 to strong acclaim. Rosemary Sorenson of the Australian Newspaper noted, " (McDonald's) bulls...may well be images of potency tethered and emasculated, but (they) are very beautiful too. McDonald's appealingly bovine subjects....look at us not, surely, as images of anguish, but they are confronting. Maybe any animal, or any thing, becomes both beautiful and confronting when an artist pours into their representation as much awe and care as McDonald has lavished on his bulls in Snort!"

His next show is in Tokyo in July 2008.

Angus McDonald lives and works in Lennox Head on the north coast of New South Wales.

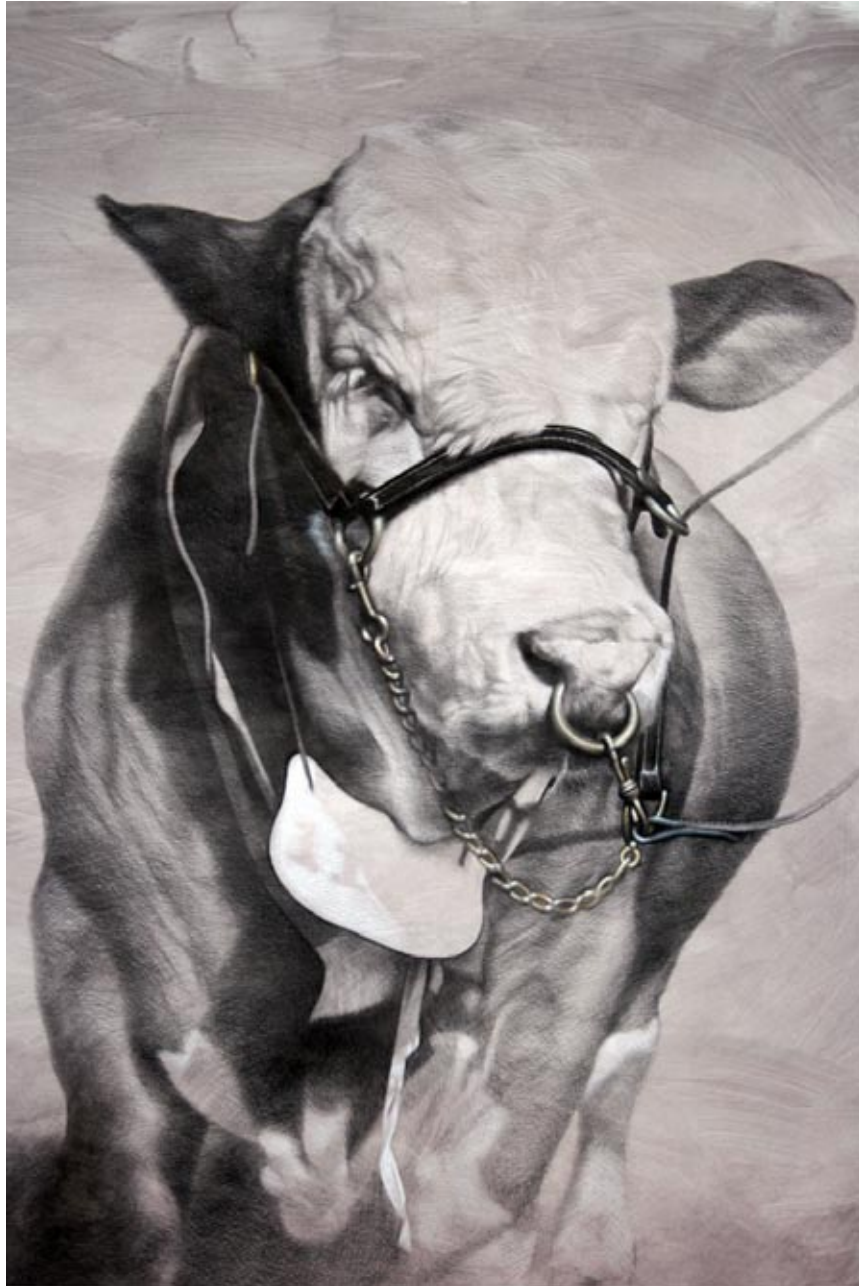
angusmcdonald.com.au

moodesign.com.au

Early morning day six, 2006, Type 'C' print, edition of 9, 51 x 34cm



Aklathia, 2001, oil on canvas, 45 x 86cm



Eduardo, 2007, mixed media on paper, 231 x 148cm



Jug and tangelos, 2002, oil on canvas, 53 x 45cm



Warren, 2007, mixed media on paper, 150 x 220cm



Buffet, 2008, mixed media on paper, 175 x 200cm



Gustavo, 2008, found driftwood, dowel, stainless steel, sealer, 324 x 136 x 127cm

Selected Biography

Angus McDonald

Born Sydney Australia 1961

1993 to 1995

Full time studies, Julian Ashton Art School, Sydney

1995

Brett Whiteley Scholarship and Tutor

Julian Ashton Art School, Sydney

1996 to 2001

Lived and worked in Leros Greece and Italy

1999, 2000

Florence Academy of Art, Firenze, Italy

2006

Expedition painter, Mawsons Huts Foundation,
Australian Antarctic Expedition, Antarctica

Solo Exhibitions

- 2008 Degawa, Tokyo
Tim Olsen Gallery, Sydney
- 2007 Rebecca Hossack Art Gallery, London
Lismore Regional Gallery, Lismore
Tim Olsen Gallery Sydney
- 2006 Jan Murphy Gallery, Brisbane
Lismore Regional Gallery, Lismore
- 2005 Tim Olsen Gallery, Sydney
Bull Market, Tim Olsen Gallery annexe, Sydney
Degawa, Tokyo
Degawa, Osaka
- 2004 Scott Livesey Art Dealer, Melbourne
- 2003 Jan Murphy Gallery, Brisbane
Tim Olsen Gallery, Sydney
- 2001 Jan Murphy Gallery, Brisbane
- 1999 Olsen Carr Art Dealers, Sydney
- 1998 Jan Murphy Gallery, Brisbane
- 1997 Olsen Carr Art Dealers, Sydney
- 1996 Olsen Carr Art Dealers, Sydney
Coffin Creek Gallery, Mudgee
- 1995 Soho Galleries, Sydney

Selected Group Exhibitions

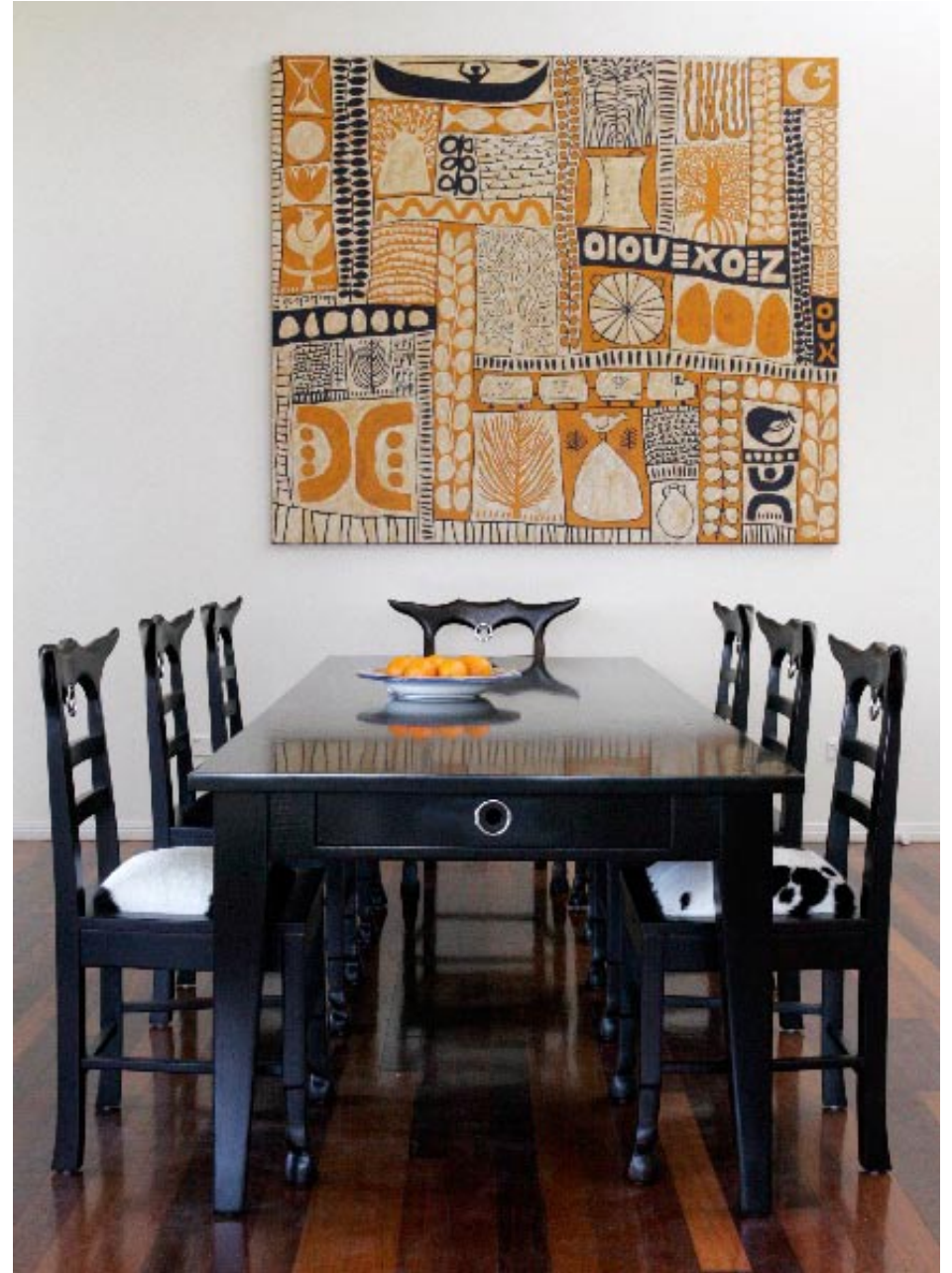
- | | | | |
|------|--|------|---|
| 2008 | <p>Workshopped, Chifley Square, Sydney
2 x 2, Tim Olsen Gallery, Sydney
FORM Design Fair. Olympia, London, furniture and paintings,
with Rebecca Hossack Art Gallery, London
Bungendore Woodworks Gallery, New South Wales</p> | 2001 | <p>Nicola Townsend, Tokyo</p> |
| 2007 | <p>Dobell Drawing Prize, Art Gallery of NSW, AGNSW, Sydney
Art London, with Rebecca Hossack Art Gallery, London
Glasgow Art Fair, with Rebecca Hossack Art Gallery, London
Vessel with Fiona Myer, Tim Olsen Gallery Annexe, Sydney
FORM Design Fair. Olympia, London, furniture and paintings,
with Rebecca Hossack Art Gallery, London
Realism, Grafton Regional Gallery, Grafton, New South Wales
FEHVA, Byron Bay, New South Wales</p> | 2000 | <p>Art Sauce, Australia's Emerging Artists, Singapore
Nicola Townsend, Tokyo
Nicola Townsend, Tokyo
2 x 2, Tim Olsen Gallery, Sydney</p> |
| 2006 | <p>Art London, Rebecca Hossack Art Gallery, London
Buttery Art Auction, Byron Bay, New South Wales</p> | 1999 | <p>Jeans for Genes, Museum of Contemporary Art, Sydney</p> |
| 2005 | <p>Piece Gallery, Mullumbimby, New South Wales
30 x 30, Greenhill Galleries, Perth
Art London, Rebecca Hossack Gallery, London</p> | 1998 | <p>Monoprints, Coffin Creek Gallery, Mudgee, New South Wales
Work from Coffin Creek Shed, Walca Arts Council, Walca, New South Wales</p> |
| 2004 | <p>Chelsea Art, Rebecca Hossack Art Gallery, London</p> | 1997 | <p>Devoured by Paint, Olsen Carr Art Dealers, Sydney
Monoprints, Coffin Creek Gallery, Mudgee, New South Wales
Jeans for Genes, Powerhouse Museum, Sydney
Still Life, Savana, Leros, Greece
Mosman Art Prize, Sydney
Painting is Not Dead, Olsen Carr Art Dealers, Sydney</p> |
| 2003 | <p>Alchemy, screenprints and ceramics, Tim Olsen Gallery,
Sydney & Jan Murphy Gallery, Brisbane
Monotypes, Abercorn Vineyard, Mudgee, New South Wales
Jeans for Genes touring retrospective, Sydney Opera House
& Victorian Arts Centre
Don't Look Down, Art Obsession/Arts Council, Tokyo</p> | 1996 | <p>Selected Works, Holdsworth Galleries, Sydney
Jeans for Genes, Art Gallery of NSW, AGNSW, Sydney</p> |
| 2002 | <p>Australian Vision, Degawa, Tokyo</p> | 1995 | <p>Lexus Art Prize, Museum of Contemporary Art, Sydney
Waverley Art Prize, Sydney
Oil Sketches, Savana, Leros, Greece</p> |
| | | 1994 | <p>Fourteen Figurative Painters, Holdsworth Galleries, Sydney
Travelling Art Scholarship, COFA, Sydney
Waverley Art Prize, Sydney</p> |
| | | 1993 | <p>Waverley Art Prize, Sydney</p> |



Pitcher, 2004, oil on canvas, 61 x 91cm



*Ferninand Rocker, 2006, solid Tasmanian blackwood & upholsterd cowhide
Moo Table & Chairs, 2006, solid Tasmanian blackwood, stainless steel & cowhide*



Moo Dining Table, 2006, solid Tasmanian blackwood



Conseula Chaise, 2008, blackwood, cowhide, leather, gold leaf, lacquer finish, painted finish, 2000 x 970 x 920mm



Angus McDonald studio 2007

Enquires

Rebecca Hossack Art Gallery
2A Conway Street
Fitzrovia, London W1T 6BA
Telephone: +44 020 7436 4899

james@rebeccahossack.com
www.r-h-g.co.uk

